

MEMS 1xN Fiber Optical Switch

N up to 380 ports, Crosstalk up to 70dB, Bidirectional, USB, RS232, I2C, TTL



DATASHEET

[Return to the Webpage](#)



The MEMS 1xN Fiber Optical Switch utilizes a reflecting silicon mirror to direct light from an input fiber from any of the N fibers to a requested output fiber among the M output fibers. This design, based on bending single crystal arms that do not fatigue or wear out, ensures high reliability and longevity in switching operations. The light path length difference between states is minimal, and the switch supports bidirectional functionality. Available in single mode, polarization maintaining, and multi-mode, the matrix switch operates independently with minimal interference during switching, supporting configurations up to 160 combinations. The switch is available as a standalone component and mounted on a PCB with control electronics powered by 5VDC. Standard control interfaces include TTL for components and USB or RS232 with GUI for PCB-mounted versions, which come with a wall-pluggable power supply and a computer interface cable, making it suitable for telecommunications, data centers, and advanced laboratory applications.

Applications

- Network
- Data Storage
- Sensor System
- Instrument

Features

- Up to 380 Channels
- Crosstalk up to 70dB
- 780 to 2100nm
- SM, PM
- Compact
- Low Cost
- Bidirectional
- High Reliability

Specifications

Parameter	Min	Typical	Max	Unit	
Wavelength	750		2200	nm	
Wavelength Range		± 30		nm	
	0.7		1.6	dB	
Insertion Loss ^[1]	<32 Channel	0.4	0.7	0.9	dB
	>32 Channel	1	1.3	1.6	
Cross Talk ^[2]	SM	55	60	70	dB
	MM	30	45	50	
Return Loss ^[3]	SM	50	50	55	-dB
	MM	30	30	35	
Repeatability	0.03		0.05	dB	
Polarization Dependent Loss (SM)		0.05	0.1	dB	
Polarization Extinction Ratio (PM)	18	23	29	dB	
Wavelength Dependent Loss ^[2]			0.3	dB	
Temperature Dependent Loss			0.2	dB	
Switching Time		5	10	ms	
Actuation		No-latching			
Optical Power Handling			500	mW	
Life Time	10 ¹⁰			cycle	
Operating Temperature	-5		70	°C	
Storage Temperature	-40		80	°C	
Power Supply	0		5	VDC	
Operation Current			500	mA	
Digital Logic High	3.3		5	VDC	
Power Consumption			100	mW	

Notes:

[1]: measured at 1550nm without connectors @CWL ±30nm, 23°C: other wavelength may be larger but less than 2dB. Each connector adds 0.3dB.

At 750nm, the loss is about 3dB for 1x8

[2]: @CWL ±30nm, 23°C

[3]: measured without connectors. With FC/ACP single mode fiber RL~60dB, and multimode fiber <40dB

Note: The specifications provided are for general applications with a cost-effective approach. If you need to narrow or expand the tolerance, coverage, limit, or qualifications, please [click this link](#):

Legal notices: All product information is believed to be accurate and is subject to change without notice. Information contained herein shall legally bind Agiltron only if it is specifically incorporated into the terms and conditions of a sales agreement. Some specific combinations of options may not be available. The user assumes all risks and liability whatsoever in connection with the use of a product or its application.

Rev 10/30/24

© Photonwares Corporation

+1 781-935-1200

sales@photonwares.com

www.agiltron.com

Information contained herein is deemed to be reliable and accurate as of the issue date. Photonwares reserves the right to change the design or specifications at any time without notice. Agiltron is a registered trademark of Photonwares Corporation in the U.S. and other countries.

MEMS 1xN Fiber Optical Switch

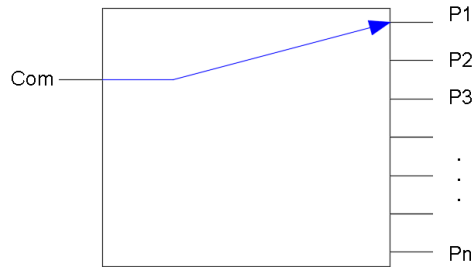
N up to 380 ports, Crosstalk up to 70dB, Bidirectional, USB, RS232, I2C, TTL



DATASHEET

Optical Path Diagram

Switchable fiber loops in series



Three Package Formats



■ Device



■ Mounted on TTL PCB



■ Mounted on USB/RS232/TTL PCB

MEMS 1xN Fiber Optical Switch

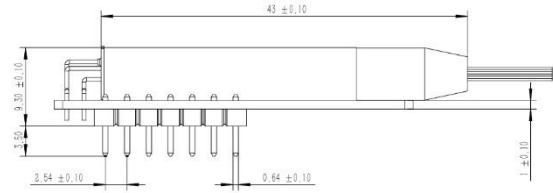
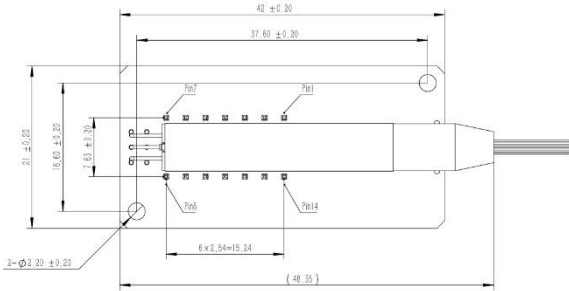
N up to 380 ports, Crosstalk up to 70dB, Bidirectional, USB, RS232, I2C, TTL



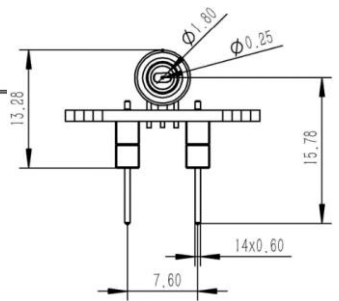
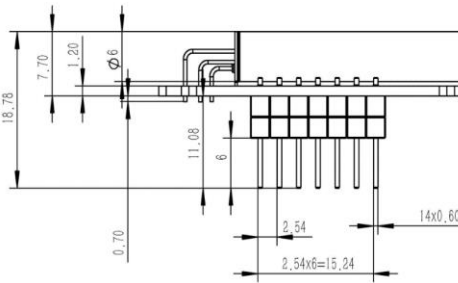
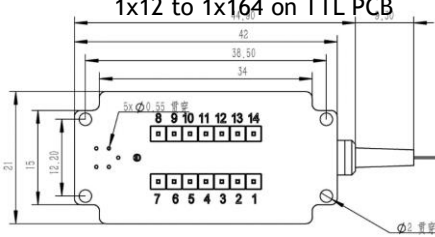
DATASHEET

Dimension (mm)

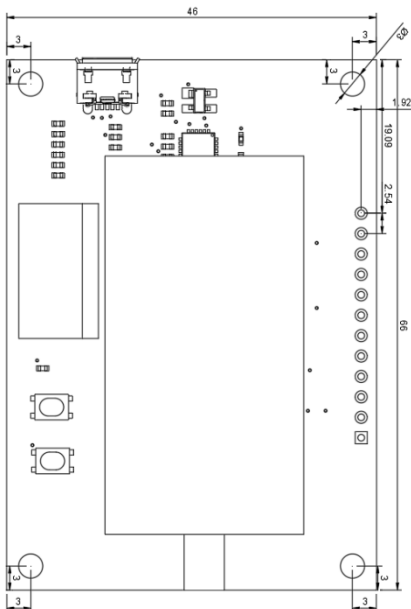
1x4, 1x8 on TTL PCB



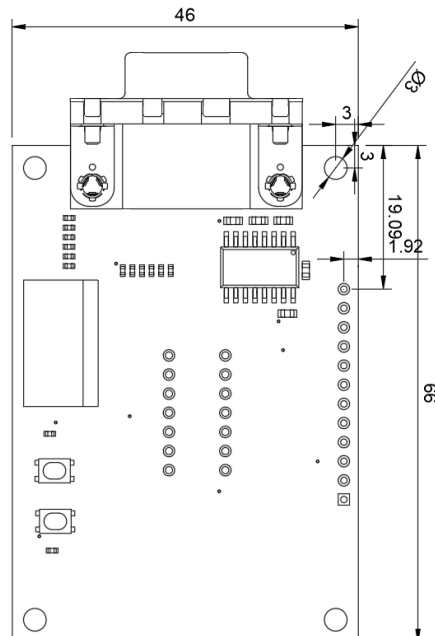
1x12 to 1x164 on TTL PCB



1x12 to 1x164 on USB/ TTL PCB



1x12 to 1x164 on RS232/TTL PCB



MEMS 1xN Fiber Optical Switch

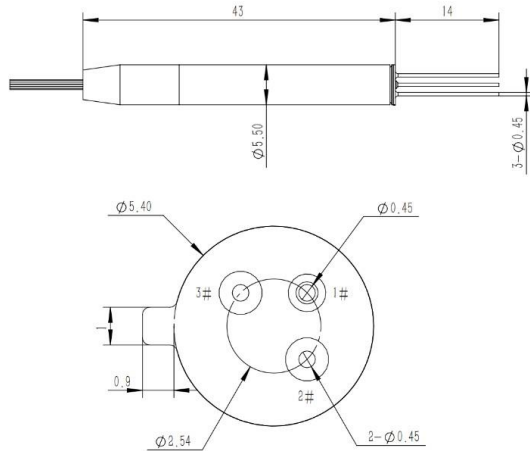


N up to 380 ports, Crosstalk up to 70dB, Bidirectional, USB, RS232, I2C, TTL

DATASHEET

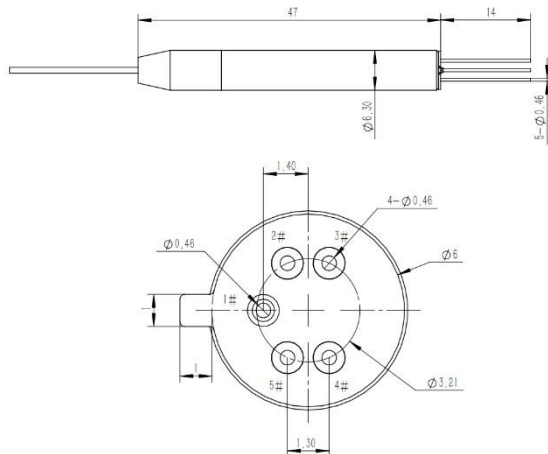
Dimension (mm)

1xN, N<16



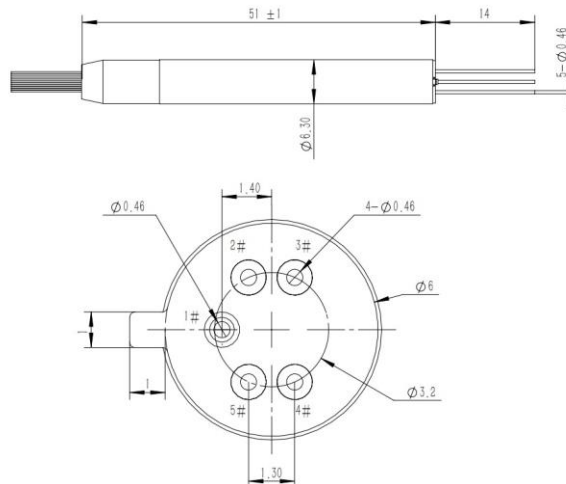
Pin number	Description
1	GND
2	Axis Y
3	Axis X

1xN, 16<N<32



Pin number	Description
1	GND
2	Axis X+
3	Axis Y-
4	Axis X-
5	Axis Y+

1xN, 32<N<64



Pin number	Description
1	GND
2	Axis X+
3	Axis Y-
4	Axis X-
5	Axis Y+

MEMS 1xN Fiber Optical Switch

N up to 380 ports, Crosstalk up to 70dB, Bidirectional, USB, RS232, I2C, TTL



DATASHEET

Ordering Information

Prefix	Configuration	Wavelength ^[1]	Driver ^[2]	Fiber Type	Fiber Cover	Fiber Length	Connector	On/Off	ER	Enclosure
MSWH-	1x4 = AA4	1240-1680nm = 1	USB/TTL = 1	SM28 = 1	Bare fiber = 1	0.25m = 1	None = 1	Regular = 1	Regular = 1	None = 1
	1x8 = AA8	1550nm = 5	RS232/TTL = 2	50/125 = 2	0.9mm tube = 3	0.5m = 2	FC/PC = 2	SM/PM>62dB = 2	23 = 2	Benchtop = B
	1x12 = A12	1310nm = 3	Component = C	Hi1060 = 3	Special = 0	1.0m = 3	FC/APC = 3	MM>50dB = 3	29 = 3	
	...	1310/1550nm = B	TTL = T	PM1550 = 4		Special = 0	SC/PC = 4			
	1x64 = A64	850nm = 8	Special = 0	62.5/125 = 5			SC/APC = 5			
	...	760-1360nm = C		SM600 = 6			SC/UPC = 5			
	1x256 = 256	1060nm = 6		SM1950 = 9			ST/PC = 6			
	...	980nm = 9		SM800 = 8			LC/PC = 7			
	1x380 = 380	780nm = 7		Hi780 = 7			MTP = 9			
		1950nm = D		PM850 = E			LC/APC = A			
	895nm = E		PM980 = F			LC/UPC = U				
	Special = 0		PM1310 = D			Special = 0				
			Special = 0							

[1]. Selection of 5, 3, B is the same device as 1, but test at different wavelength with extra cost.

RED indicates special order

Note:

- PM1550 fiber works well for 1310nm

Driver Part Number: SWDR-S1XN2D5VSUSB/TTL

Driver Part Number: SWDR-S1XN2D5VRS232/TTL

Application Notes

Fiber Core Alignment

Note that the minimum attenuation for these devices depends on excellent core-to-core alignment when the connectors are mated. This is crucial for shorter wavelengths with smaller fiber core diameters that can increase the loss of many decibels above the specification if they are not perfectly aligned. Different vendors' connectors may not mate well with each other, especially for angled APC.

Fiber Cleanliness

Fibers with smaller core diameters (<5 μm) must be kept extremely clean, contamination at fiber-fiber interfaces, combined with the high optical power density, can lead to significant optical damage. This type of damage usually requires re-polishing or replacement of the connector.

Maximum Optical Input Power

Due to their small fiber core diameters for short wavelength and high photon energies, the damage thresholds for device is substantially reduced than the common 1550nm fiber. To avoid damage to the exposed fiber end faces and internal components, the optical input power should never exceed 20 mW for wavelengths shorter 650nm. We produce a special version to increase the how handling by expanding the core side at the fiber ends.

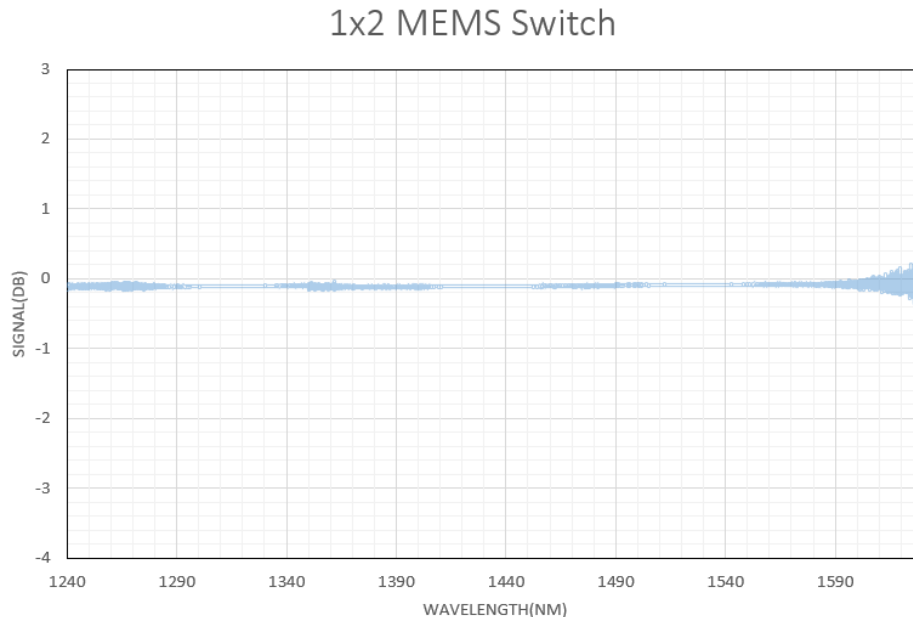
MEMS 1xN Fiber Optical Switch

N up to 380 ports, Crosstalk up to 70dB, Bidirectional, USB, RS232, I2C, TTL



DATASHEET

Typical Insertion Loss vs Wavelength (1240-1630nm)



Driver Description

The MSWH MEMS 1xN Driver (Up to 164 ports) has three control modes: (1) USB/TTL (Virtual COM) with a user-friendly GUI Windows™ program supporting UART commands. The unit has a mini USB connector with a USB-to-MicroUSB cable. It can be powered by a 5V USB cable and USB power supply or via onboard 5V-GND holes. (2) RS232/TTL with a user-friendly GUI Windows™ program supporting UART commands. The unit has an RS232 connector. As shown below the switches are mounted on these driver PCBs and tested prior to shipping. This makes integration or performance evaluation easy. (3) The switches can also be mounted directly onto the customer PCB with 14 pins, following detailed instructions. This approach requires customers to have circuit design experience.

Manual Operation Instruction

- **Power the Board**

The unit can be powered up via 5V USB power supply.

- **Onboard Switch Control**

Onboard DIP-6 switch is available for quick TTL function test and fast manual control. After setting the DIP-6 switch, press the STROBE button to change the channel of MEMS 1xN switch.

MEMS 1xN Fiber Optical Switch

N up to 380 ports, Crosstalk up to 70dB, Bidirectional, USB, RS232, I2C, TTL



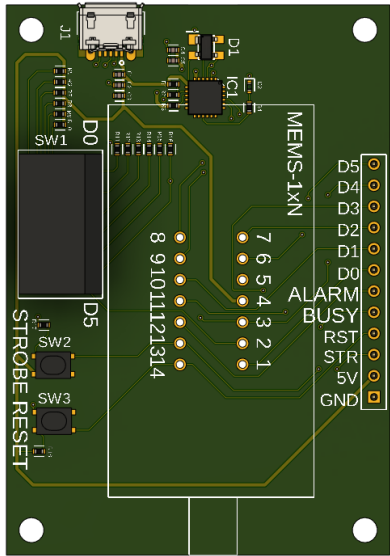
DATASHEET

TTL Operation Instruction

- TTL Interface Definition

Name	Direction	Description
5V	Power	The driver board can also be powered up via these two holes.
GND	Ground	
D0-D5	Input	6 Pin TTL
STR	Input	STROBE, Send a pulse to set the switch channel
RST	Input	RESET, Send a pulse to reset switch status
BUSY	Output	Logic HIGH when the device is busy
ALARM	Output	Logic HIGH when the device meets error when booting/ high temperature

CH	D5	D4	D3	D2	D1	D0
1	0	0	0	0	0	0
2	0	0	0	0	0	1
3	0	0	0	0	1	0
.						
64	1	1	1	1	1	1



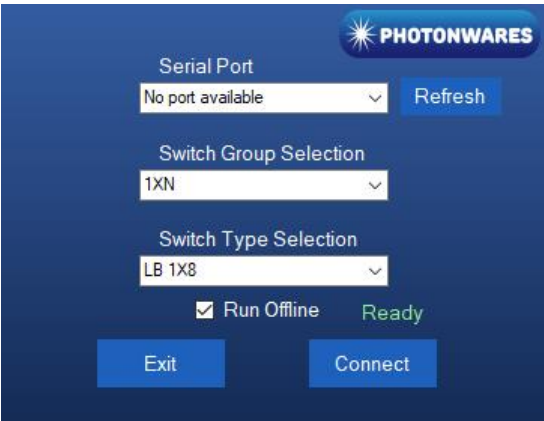
Computer Graphic Software User Guide

- Install the Program

Click on setup.exe for the automatic installation, which should be provided with the product.

- Run the Program

Run the "Switch Operation Program.exe" and the program will open the configuration window. Select the correct Switch Group and select the specific Switch Type. Then click the "Connect" button and the program will establish the connection between PC and board.



Information contained herein is deemed to be reliable and accurate as of the issue date. Photonwares reserves the right to change the design or specifications at any time without notice. Agiltron is a registered trademark of Photonwares Corporation in the U.S. and other countries.

MEMS 1xN Fiber Optical Switch



N up to 380 ports, Crosstalk up to 70dB, Bidirectional, USB, RS232, I2C, TTL

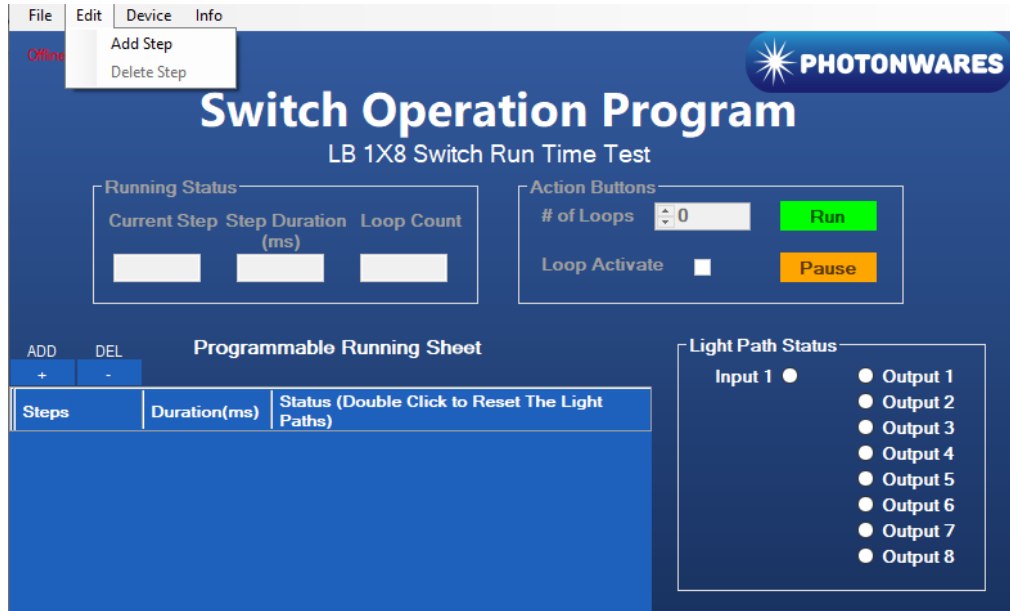
DATASHEET

TTL Operation Instruction

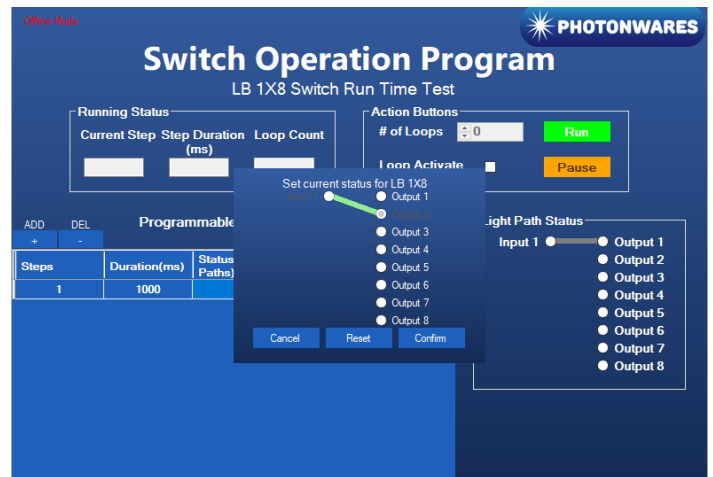
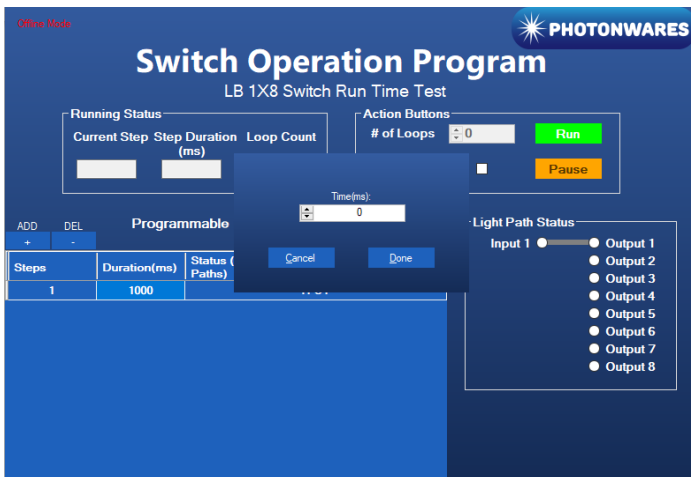
• **Create and edit testing time sequence**

Add step: Click the “Add Step” button in the menu strip or click the “+(ADD)” button would both add a step to the Programmable Running Sheet.

Delete step: Click the “Delete Step” button in the menu strip or click the “-(DEL)” button would both delete a step in the Programmable Running Sheet.



Edit step: There are two things that you can modify for one step. One is the light path, and the other is the duration for each step. Double click the cell that you want to modify, and the program will allow you to modify the setting.



MEMS 1xN Fiber Optical Switch

N up to 380 ports, Crosstalk up to 70dB, Bidirectional, USB, RS232, I2C, TTL



DATASHEET

Command List

- **Command in Serial**

The serial communication should be set in **115200 baud rate, none parity, 8 data bits, 1 stop bits**.

Command in **ASCII**:

1. Check PN of device:

CMD: *PN<cr>

RTN: <cr><lf>AB.CD.EFGH<cr><lf>

2. Check SN of device:

CMD: *SN<cr>

RTN: <cr><lf>ABCDEFGHIJ<cr><lf>

3. Set Channel:

CMD: *SWABC<cr>

RTN: <cr><lf>CHAN:ABC<cr><lf>

Example: *SW001<cr> RTN: <cr><lf>CHAN:001<cr><lf>

Note: <cr> is 0x0C in HEX, \n in ASCII